

# PELLET AMERICA CORPORATION

Turning Today's Waste  
Into Tomorrow's Energy!

Presenter: Autumn Wiedmeyer

The bottom of the slide features two horizontal bars. The left bar is orange and the right bar is blue, both extending across the width of the slide.

# Agenda:

---

- Types of Materials Used
- Forms of Material
- Pelletizing Process
- Pellet Users
- Environmental Impact of our Pellets
- Turbine Process

# Acceptable Materials

Plastics

Coated Papers

Obsolete Films

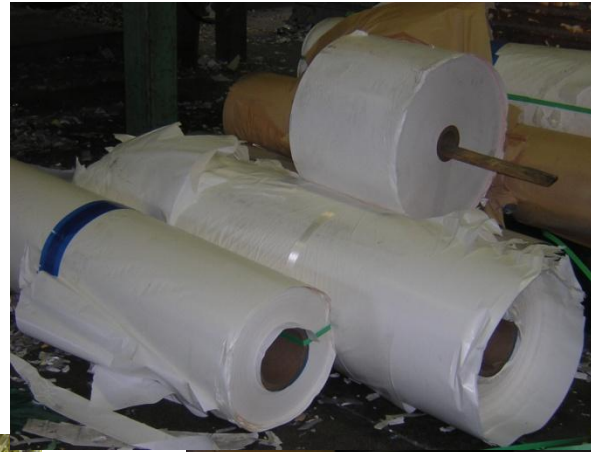
Waxed Corrugates

Construction Paper

Pressure Sensitive/Matrix/Stickers

# How the Material Comes In...

## Trailers

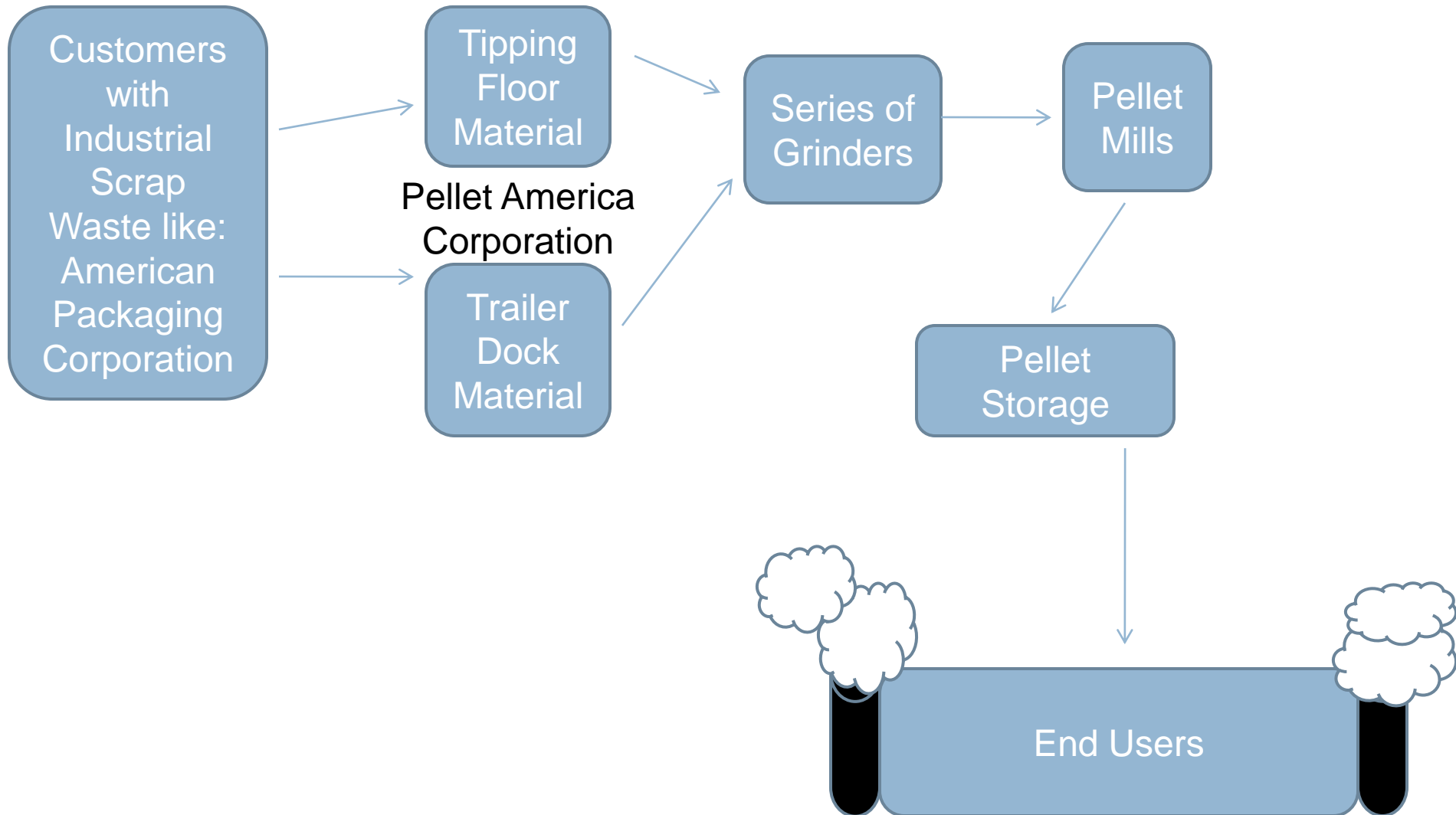


# How the Material Comes In...

## Compactors & Open Tops



# How the Pellets are Made...



# Pellet Consumers

- Universities
- Power Plants/Utility Companies
- Paper Mills

Other Fuels Mixed With Our Pellets  
Include:

- \*Coal
- \*Bark
- \*Rubber



# Pellets VS Coal

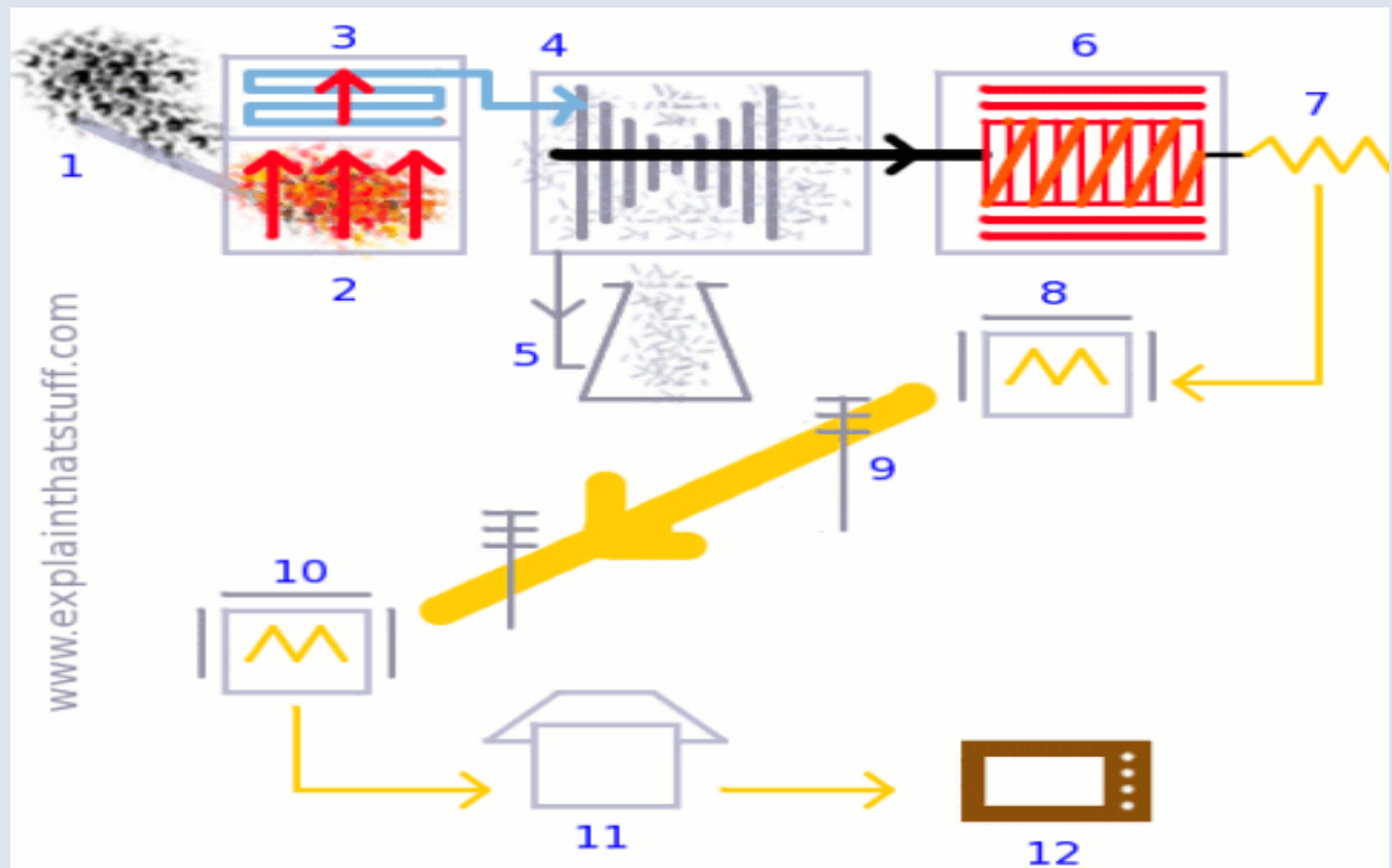
## $\frac{3}{4}$ " Industrial Pellets

- 8,000/12,000 BTU
- Green Fuel/  
Renewable Energy
- Sulfur - .03%
- Materials diverted from the landfill are used to create the fuel

## Coal

- 8,000/12,000 BTU
- Fossil Fuel/  
NonRenewable Energy
- Sulfur - 1%
- Materials must first be mined, which can be expensive, to create the fuel





## How Electricity is Produced...

The “End User” of pellets burns them in a boiler to produce steam. The steam is run through a turbine to generate electricity and is also used in the paper making process.

Any Questions?

Thank You For Your  
Time!